

3 - BEDROOM DUAL-KEY

TYPE C3-PH

96 sq m / 1033 sq ft

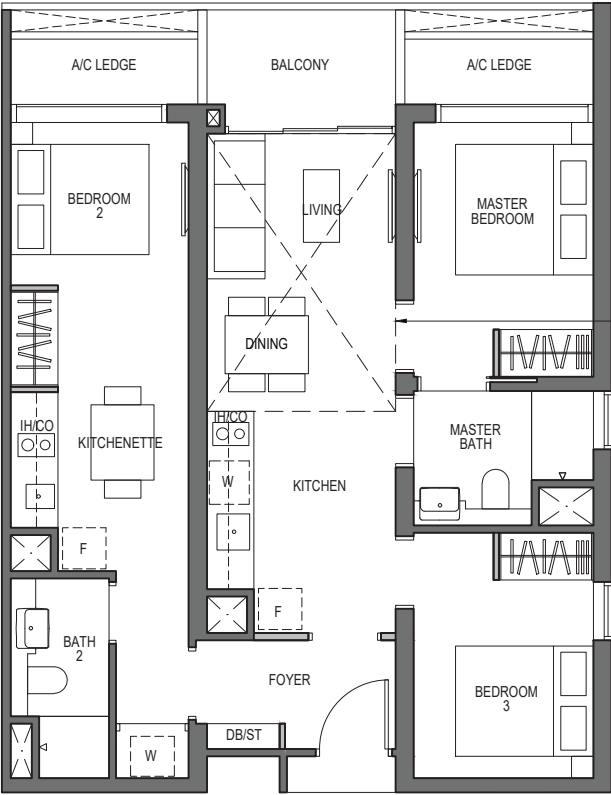
[inclusive of 11 sq m / 118 sq ft of void area (high ceiling)]

BLOCK 9

UNIT

#27-02

#27-03*



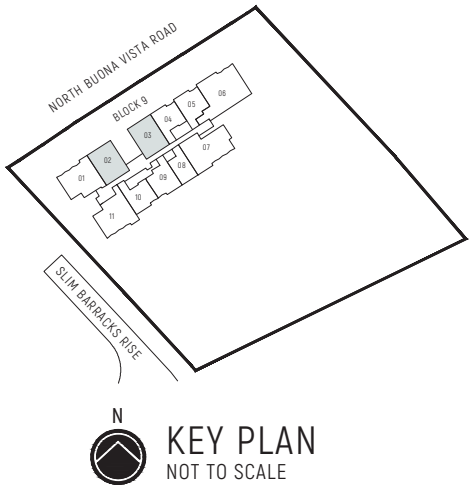
Dotted Line denotes
Strata Void Area for Type C3-PH
which is part of the Strata Void



LEGEND (where applicable):

Non-Structural Wall	F - Fridge	W - Washer	HS - Household Shelter
Structural Wall (no hacking allowed)	IH - Induction Hob	GH - Gas Hob	CO - Convection Oven
Services Void Space (excluded from strata area)	ST - Storage	DB - Distribution Board	WC - Water Closet

* - Mirror Image



The balcony shall not be enclosed. Only approved balcony screens are to be used. For illustration of the approved balcony screen, please refer to diagram annexed hereto as "Annexure A". All plans are subjected to amendments as may be approved by the relevant authorities. Floor areas are approximate measurements and are subjected to final survey. All RC Ledge (Reinforced Concrete Ledge) are excluded from strata area. BP Approval No. A1720-00020-2021-BP02 dated 17/03/2023